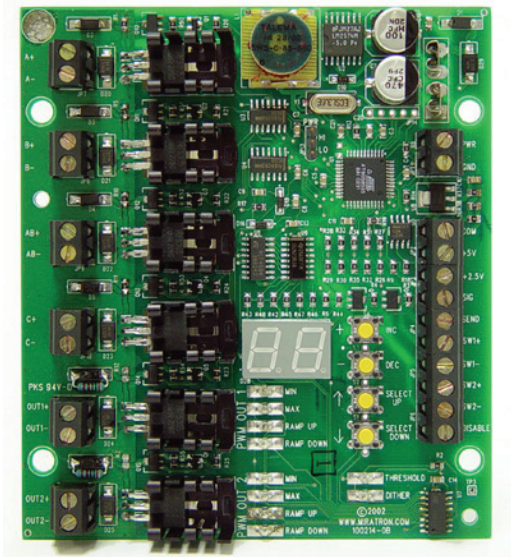




PC200 Proportional Controller Card, Dual

One pot or joystick controls two proportional outputs (fwd/rev).



FEATURES

Simple, Complete Solution

Complete, single component interface allows virtually any joystick or potentiometer to directly control two PWM current operated valve actuators.

Universal Inputs

Compatible with a wide range of input devices, including potentiometers, transducers, and other devices producing 0 to 10vdc, 0 to 5vdc, or 0.5 to 4.5vdc control signals. Also accepts inputs from switches for manual override.

Fully Adjustable

Adjustable min, max, ramp-up, ramp-down, dither, and threshold (deadband). Great for setting a desired operating range and “feel.”

Versatile Outputs

Two high-capacity proportional output and three digital outputs are ideal for 2-coil control applications. Outputs can drive up to 5-amp coils directly.

OPERATION

Input signal

Jumper selectable 0 to 5vdc or 0.5 to 4.5vdc input. Use resistor divider (see installation instructions) to accommodate 0 to 10vdc input signal. Use 250-ohm shunt resistor (see installation instructions) to accommodate 4 to 20mA input signal.

Adjustments

Min, max, ramp up, ramp down, dither, and threshold (deadband) are adjustable from 0-99% of full-scale range. See specifications for adjustment ranges.

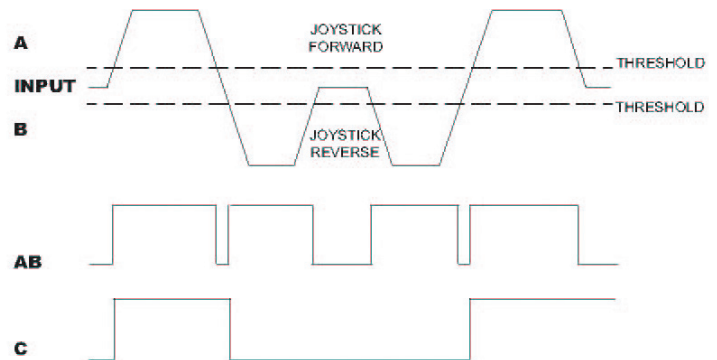
Outputs

Proportional and digital outputs can drive up to 5-amp coils directly. Digital output A operates whenever joystick or pot is above threshold (deadband) setting. Digital output B operates whenever joystick or pot is below threshold setting. Digital output AB operates whenever joystick or pot is above OR below threshold setting. Digital output C operates whenever joystick or pot is above threshold, and remains energized until joystick is below minimum threshold (pulled back).

Manual Operation

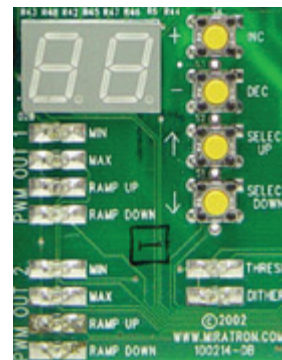
Inputs are provided for toggle switches to manually override or “bump” the output signals without using a joystick or potentiometer.

OPERATION DIAGRAM



SETUP

Pushbutton and LED menu interface simplifies adjustments. Digital setup eliminates guesswork.



ORDERING INFORMATION

PART #	DESCRIPTION
PC200	Dual coil valve driver

SPECIFICATIONS

General

Power requirement 9-30vdc, 250mA nominal + power to loads

Fuse Blade fuse, 15-amp

Digital Output

Type Sourcing

Output Same as supply voltage, 5-amps max

PWM Output

Frequency 1700Hz

Dither 100Hz, 0-10% of max current

Output Same as supply voltage, 5-amps max

Adjustments Min/Max: 0-5-amps

Ramp up/down: 0.1 to 5 seconds

Threshold: 0 to 2vdc

Dither: 0-10%

Analog Input

Signal Range 0 to 5vdc or 0.5 to 4.5vdc, jumper selectable

Courtesy Power +5vdc, 50mA max signal provided for potentiometer

+2.5vdc, 50mA max provided for tap reference

1k pot recommended

Digital Inputs

Manual Switches Dry contact - connect "SEND" to SW1+ or SW1- and SW2+ or SW2-

Disable* Connect to power terminal to disable control

Do not use disable input for safety control

Dimensions

Overall 4.8"L x 4.25"W x 1.125"D

Mounting 4 x #6 self-tapping screws

Environmental

Storage -40°C to 85°C

Operating -10°C to 60°C

* When using 2 controllers with 2-axis joystick, AB(+) output terminal of one controller can be connected to DISABLE terminal of a second controller to prevent simultaneous operation of X and Y axis.

WIRING EXAMPLES:

